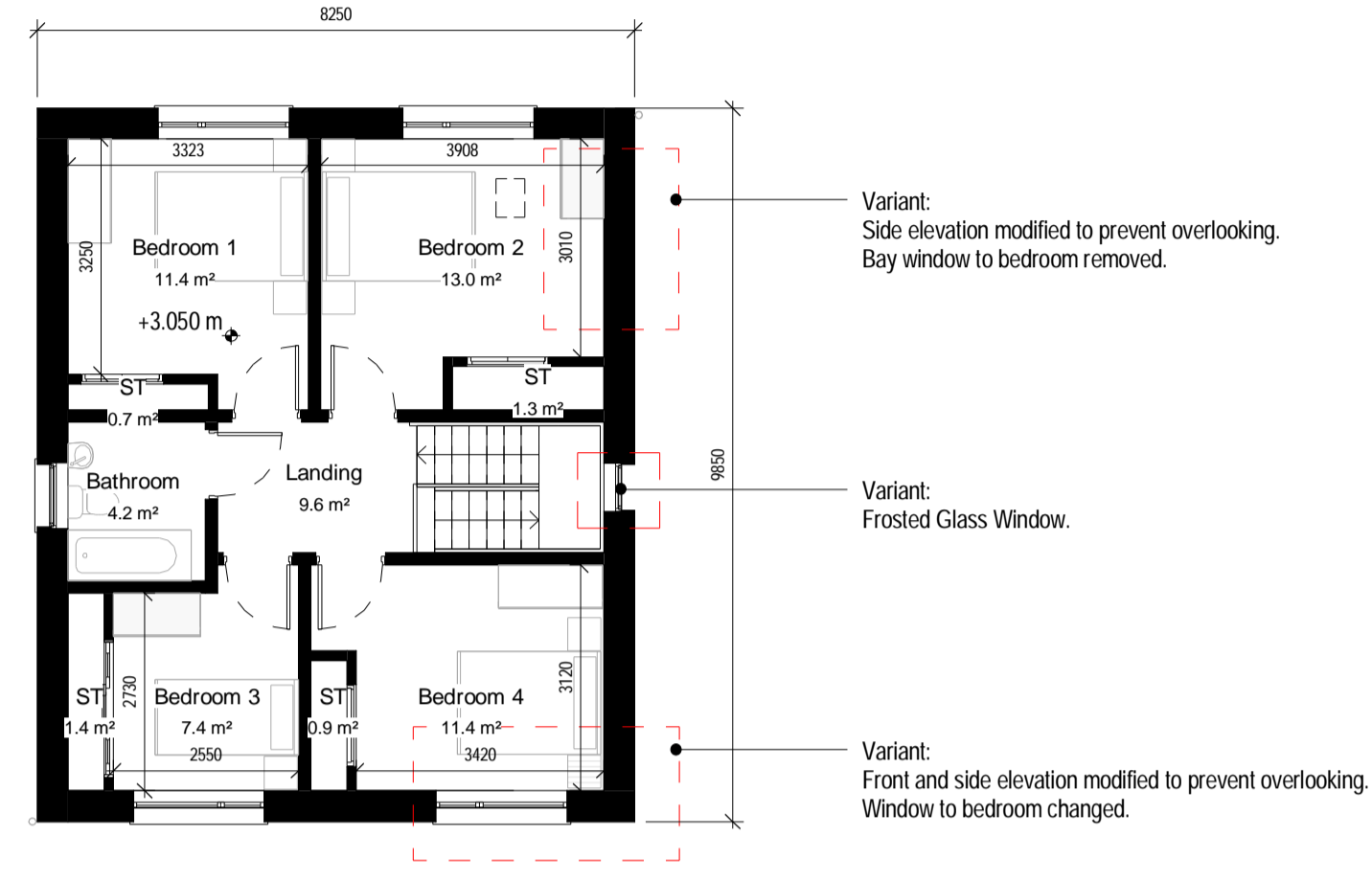


House Type 4A Variant: Unit 1

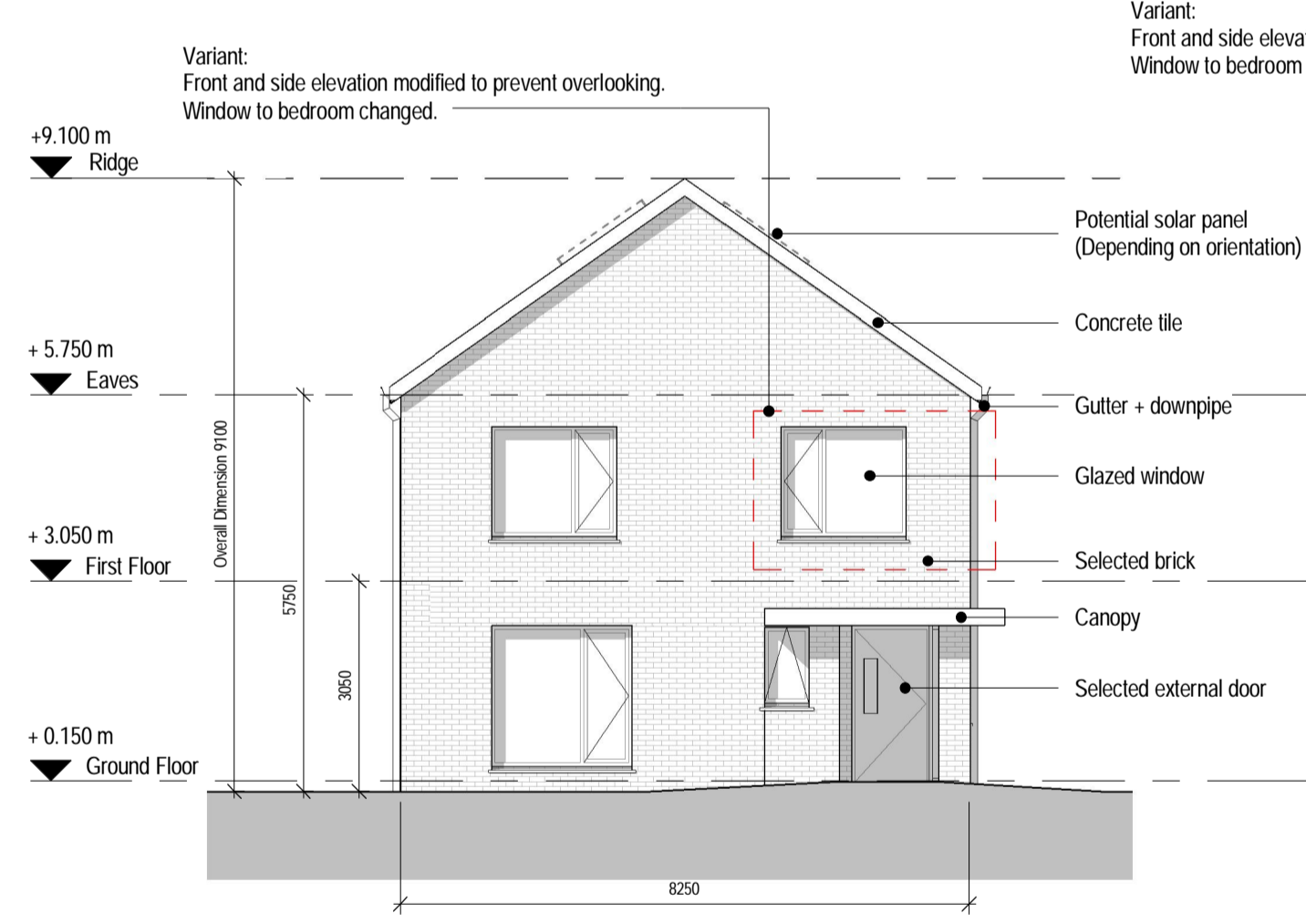


1 First Floor Plan
1:100

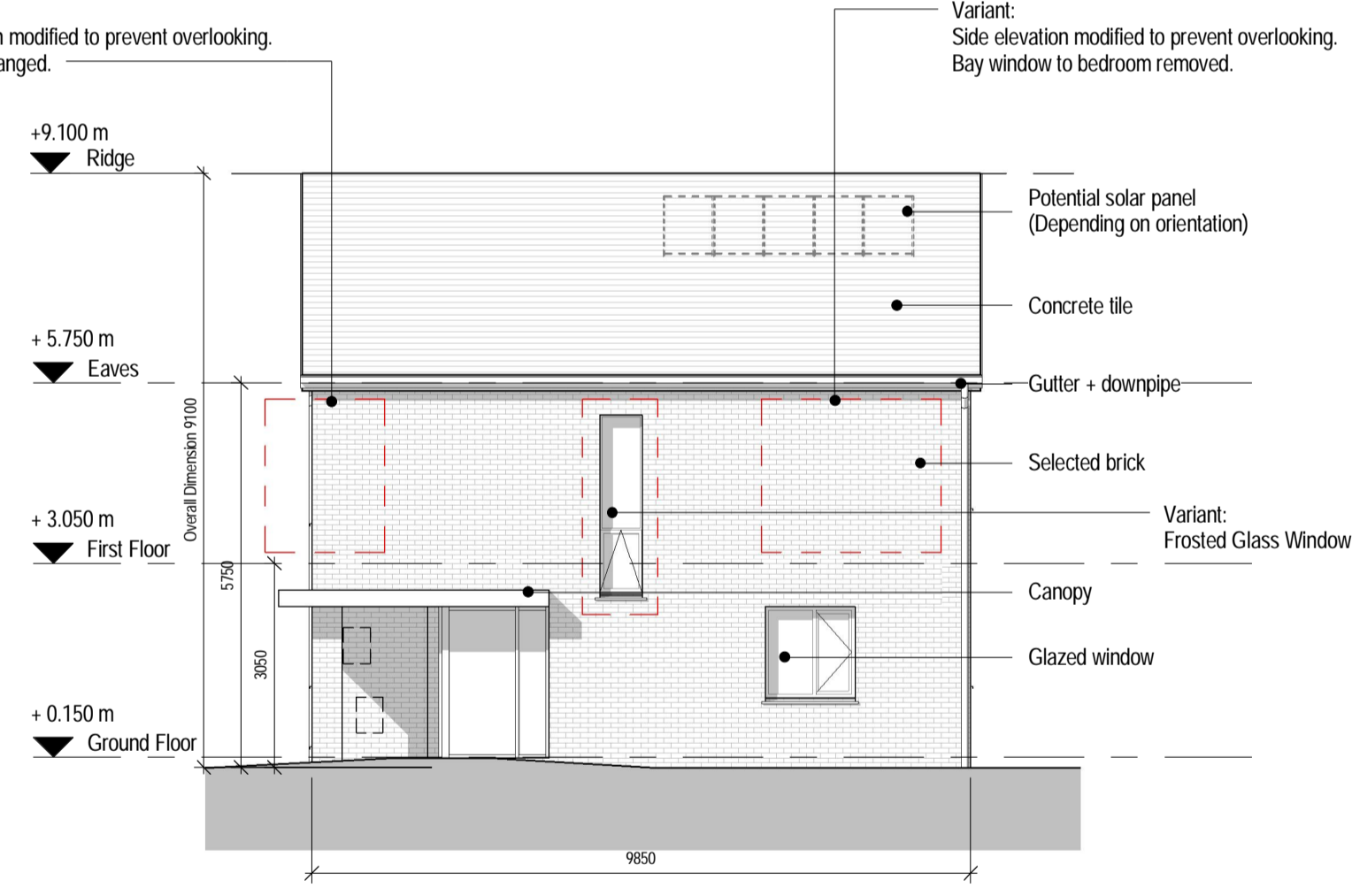
Variant:
Side elevation modified to prevent overlooking.
Bay window to bedroom removed.

Variant:
Frosted Glass Window.

Variant:
Front and side elevation modified to prevent overlooking.
Window to bedroom changed.

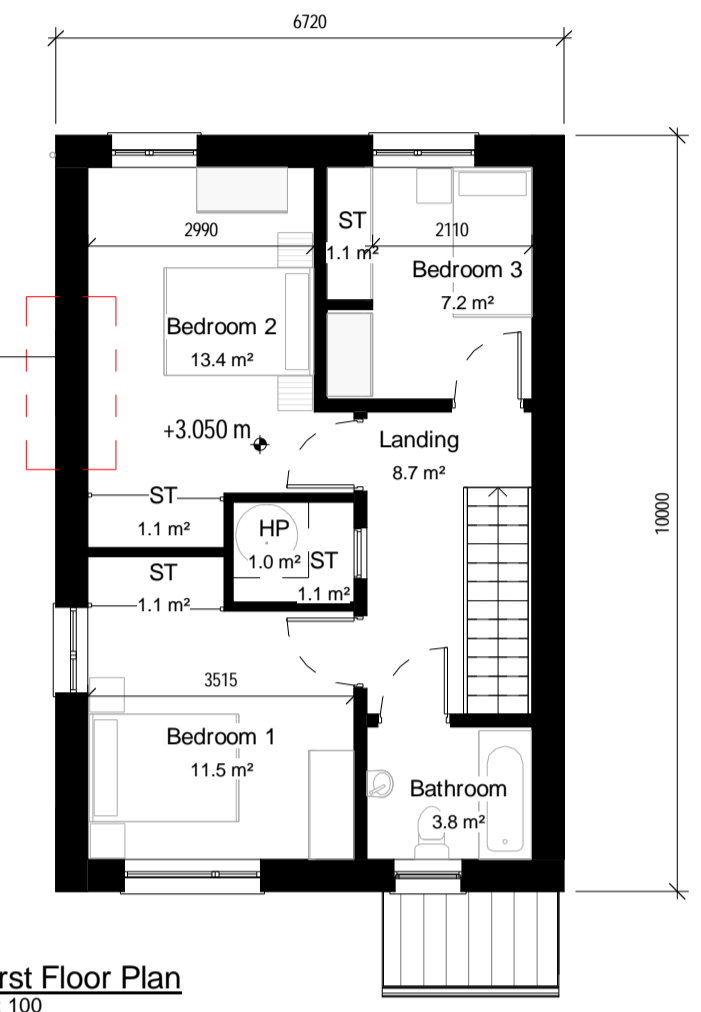


2 Front Elevation
1:100



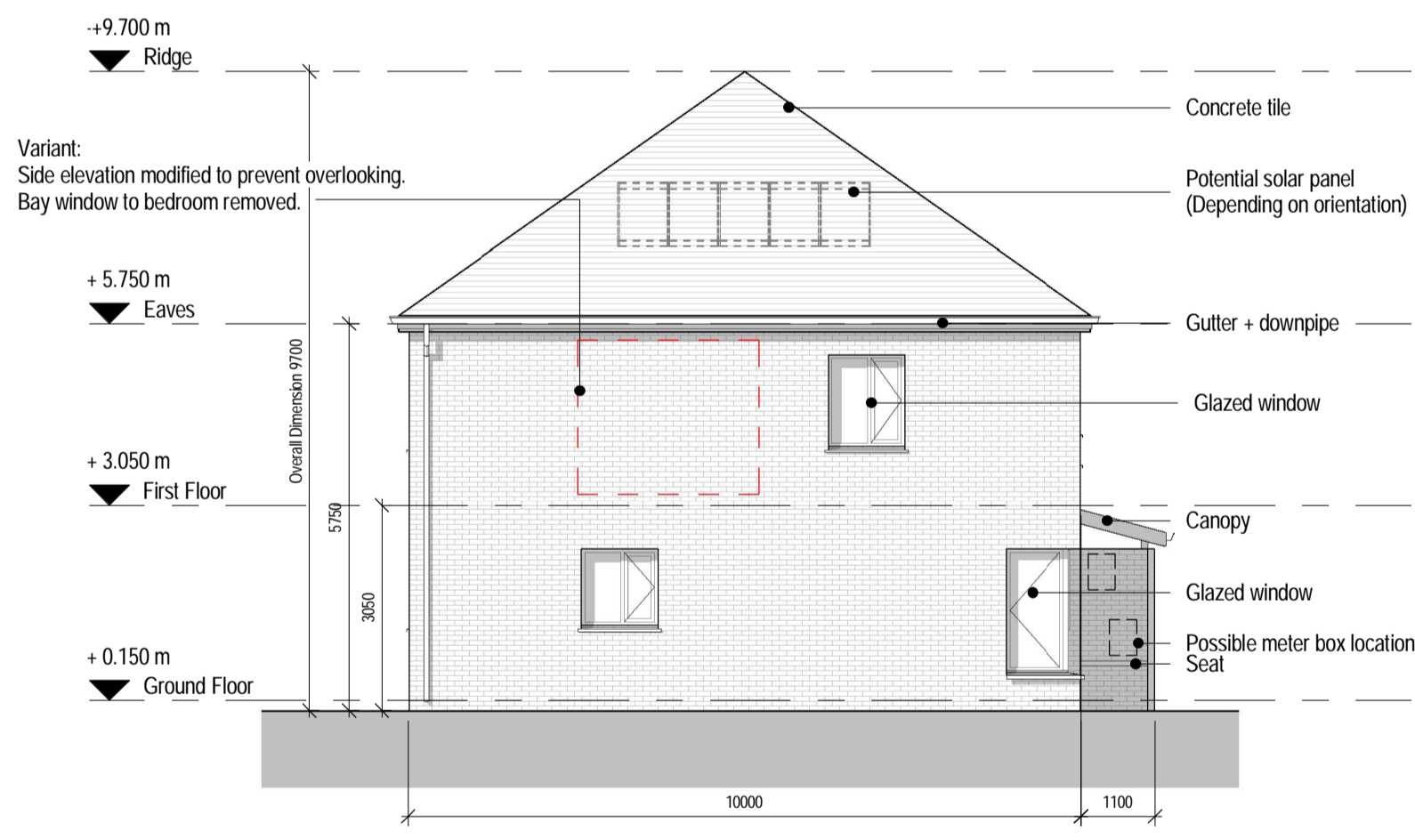
3 Side Elevation
1:100

House Type 3D Variant: Unit 6



4 First Floor Plan
1:100

Variant:
Side elevation modified to prevent overlooking.
Bay window to bedroom removed.



5 Side Elevation
1:100

Notes:
Do not scale from this drawing.
Use figured dimensions only.
All errors and omissions to be reported to the Architect.
This drawing to be read in conjunction with relevant consultant's drawings.
All dimensions are in millimetres and all levels are in meters to match Datums unless otherwise noted.

Contractor Design responsibility
It is noted that there are many elements within the works that require contractor design, and will be subject to certification as part of BCAR - see Preliminary Inspection Plan for clarity on certification required.

© This drawing or design may not be reproduced without permission.

Revisions:

Rev	Description	Date	By
1	Issued for Information	21/03/2017	CD
2	Issued for Planning	10/04/2017	CD

Project:
Proposed development of 74 no. residential units at Craddockstown Road, Craddockstown Demesne, Naas, Co. Kildare

Client:
Kildare County Council

Title:
House Type Variants Units 1 + 6-Plans, Elevations

Drawing / Document Name:		Project		Originator	Role	Type	Sheet Number
2219 SHB1-CRA-AR-COA-DR-0520		Project		Sean Colley	Architect	CD	1
Suitability Status: Code - Description		Revision:					
S4 - For Stage Approval		P- 2					
Scale @ A1	Drawn:	Checked:	Date:				
1:100	Sean Colley	Leanne Doherty	Dec 2016				